

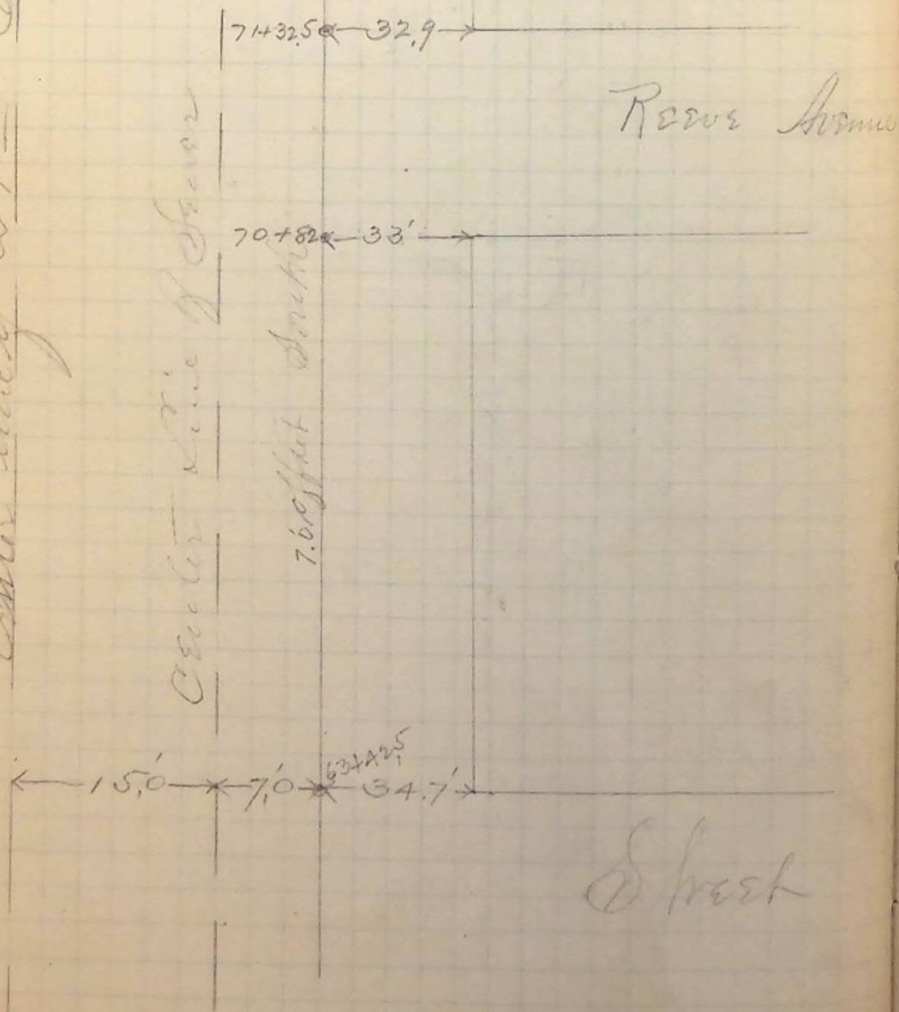
P. M. Sept 19-90

Location of River Avenue  
with Reference to Outfall Sewer

Center Line of 21st Street

Center Line of Sewer

7.60 feet distance



Set Center Lines and  
Curb Stakes (35.5' each side of  
center) on Adams St from  
26th to 25th St,  
Sta 100+35.5 to 107+26.9

A. M.

Sept 21st 90